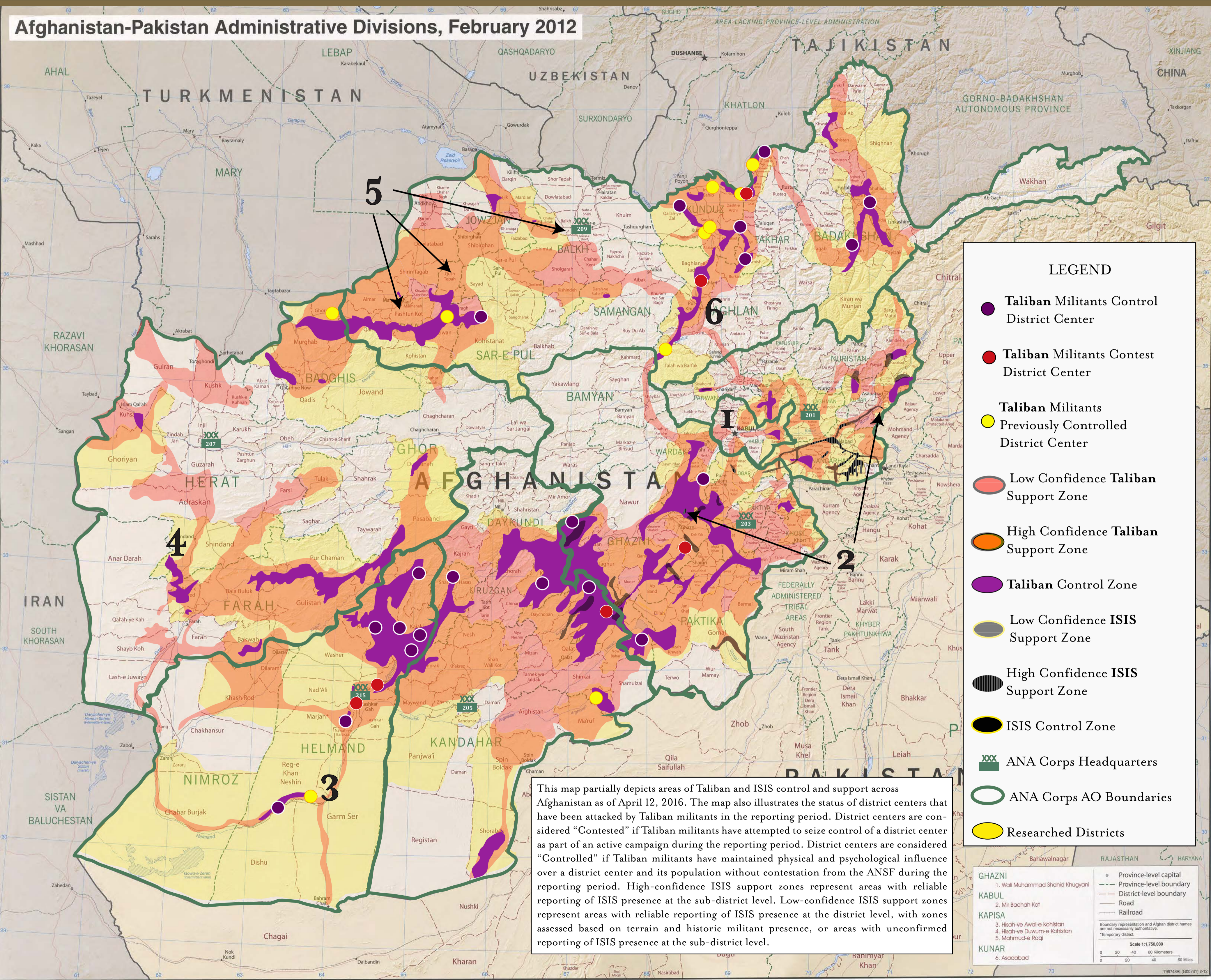


**Afghanistan-Pakistan Administrative Divisions, February 2012**



**LEGEND**

- Taliban Militants Control District Center
- Taliban Militants Contest District Center
- Taliban Militants Previously Controlled District Center
- Low Confidence Taliban Support Zone
- High Confidence Taliban Support Zone
- Taliban Control Zone
- Low Confidence ISIS Support Zone
- High Confidence ISIS Support Zone
- ISIS Control Zone
- XXX ANA Corps Headquarters
- ANA Corps AO Boundaries
- Researched Districts

This map partially depicts areas of Taliban and ISIS control and support across Afghanistan as of April 12, 2016. The map also illustrates the status of district centers that have been attacked by Taliban militants in the reporting period. District centers are considered "Contested" if Taliban militants have attempted to seize control of a district center as part of an active campaign during the reporting period. District centers are considered "Controlled" if Taliban militants have maintained physical and psychological influence over a district center and its population without contestation from the ANSF during the reporting period. High-confidence ISIS support zones represent areas with reliable reporting of ISIS presence at the sub-district level. Low-confidence ISIS support zones represent areas with reliable reporting of ISIS presence at the district level, with zones assessed based on terrain and historic militant presence, or areas with unconfirmed reporting of ISIS presence at the sub-district level.

<b>GHAZNI</b>	1. Wali Muhammad Shahid Khugyani	Province-level capital
<b>KABUL</b>	2. Mir Bachah Kot	Province-level boundary
<b>KAPISA</b>	3. Hisah-ye Awai-e Kohistan	District-level boundary
	4. Hisah-ye Duwum-e Kohistan	Road
	5. Mahmud-e Raqi	Railroad
<b>KUNAR</b>	6. Asadabad	Boundary representation and Afghan district names are not necessarily authoritative.
		*Temporary district.