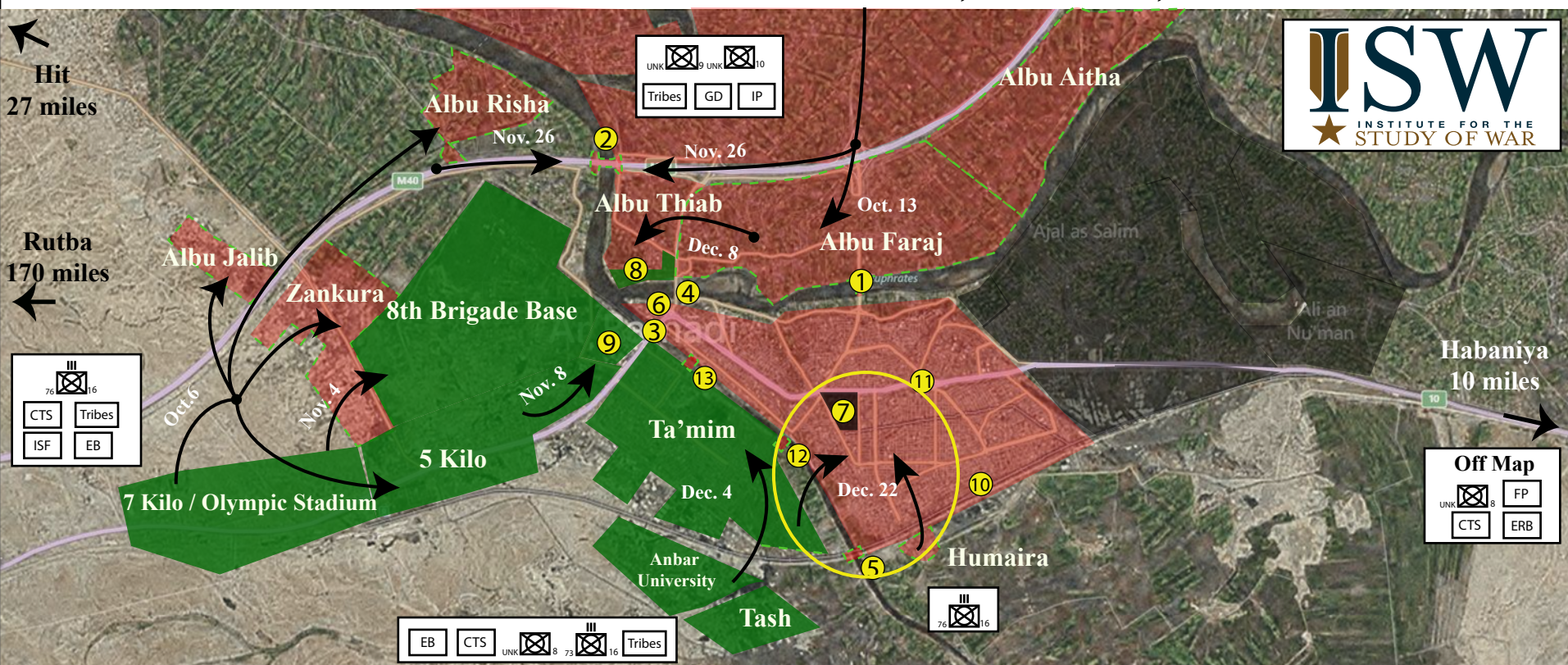


CONTROL MAP OF RAMADI, DEC 22, 2015



Key Infrastructure and Important Locations

- | | | | |
|---------------------|--------------------|-------------------------------|------------------------|
| ① Albu Faraj Bridge | ④ Warrar Dam | ⑦ Government Complex | ⑩ Ramadi Train Station |
| ② Palestine Bridge | ⑤ Qassim Bridge | ⑧ Anbar Operations Command HQ | ⑪ Grand Mosque |
| ③ Ramadi Barrage | ⑥ Justice Compound | ⑨ Glass Factory | ⑫ Haouz Bridge |
| | | | ⑬ Omar Bridge |

Formations Key

- | | |
|--|----------------------------|
| CTS Counter-Terrorism Service | IP Iraqi Police |
| ISF Unidentified Iraqi Security Forces | Tribes Tribal Fighters |
| EB Emergency Battalions | GD CTS Golden Division |
| FP Federal Police | Mechanized Infantry |
| ERB Emergency Response Brigades | Regiment |
| | UNK Unknown Brigade Number |

- | | |
|------------------------|------------------------------|
| Downtown Ramadi | ISIS Control |
| Contested, ISF present | ISF / Tribal Fighter control |
| | Contested |

Areas circled in yellow indicate areas whose status has recently changed as a result of the most recent advances. Numbers and letters in yellow indicate key infrastructure and buildings. Habaniya is the primary base for Anbar Operations Command in the vicinity of Ramadi and is located east of Ramadi.

Content by: Patrick Martin and ISW Iraq Team
Graphics by: Patrick Martin

Hit 27 miles
Rutba 170 miles

Habaniya 10 miles

Off Map

| | |
|--|--|
| | |
| | |